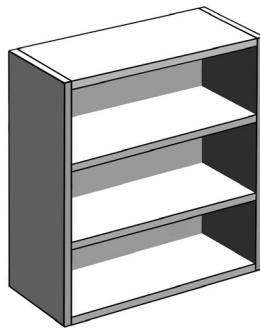


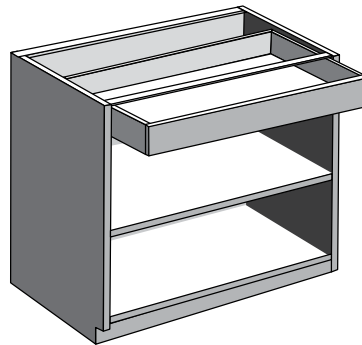
## CABINET NO DOOR(S)

- Cabinet includes shelves, drawer boxes, accessories and glides where applicable.
- No doors or drawer fronts will be included.
- Cabinet will have white or wood veneer interiors unless you have selected a glass wall cabinet with finished interiors.
- Can be ordered for any standard cabinet.

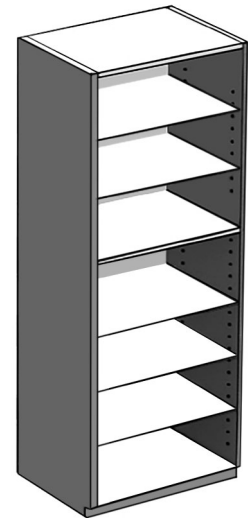
Examples:



W3030-ND



B1D3034-ND



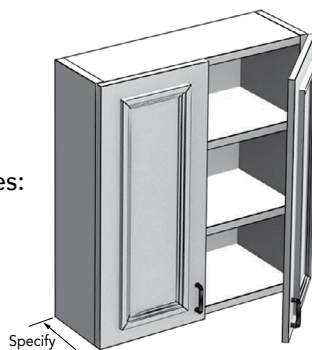
TU3690-ND

CODE	WALL	BASE	VANITY	TALL
ND	-15%	-15%	-15%	-15%

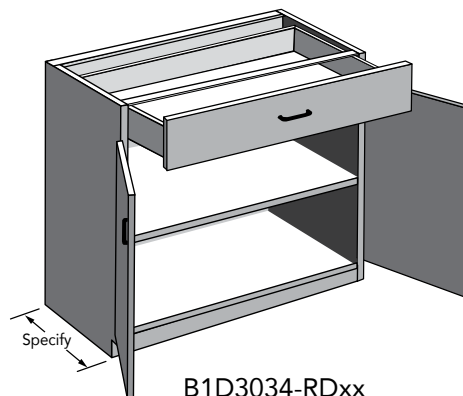
## REDUCED DEPTH

- Minimum depth of a cabinet without a drawer is 6".
- Minimum depth of a cabinet with a drawer and glides is 13".
- All other depths with drawers are quoted only (will add to lead times).
- Some cabinets may not be able to be modified.
- Corner cabinets excluded.
- Specify depth after code, i.e. B1D3034-RD15
- Please note: base & tall cabinet shelves are set back from front of box 2 1/2" (i.e. TU3090-RD9 has a shelf 2 1/2" less than box). Wall cabinets are set back 1".
- Reduce width in increments of 1/4". i.e. B1D3034-RD18.75.

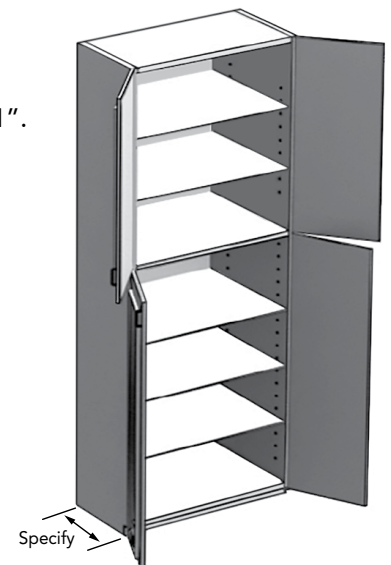
Examples:



W3030-RDxx



B1D3034-RDxx



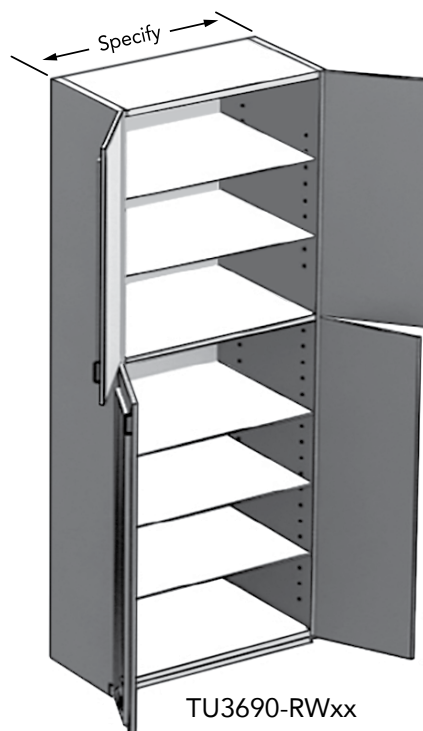
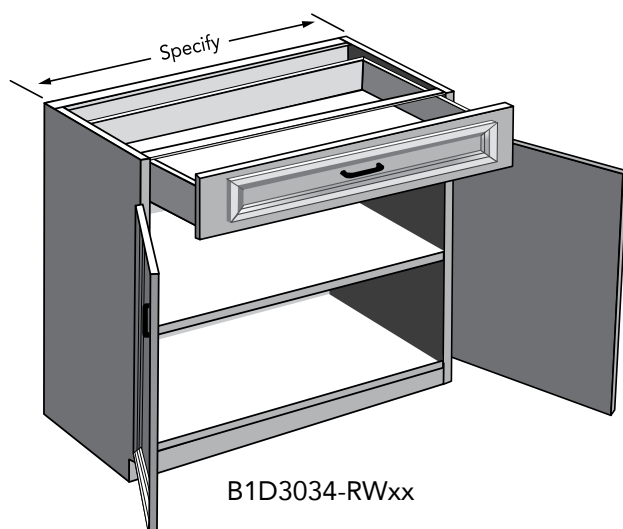
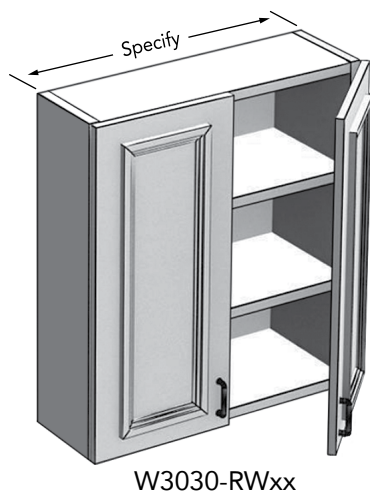
TU3690-RDxx

CODE	WALL	BASE	VANITY	TALL
RD	\$100	\$100	\$100	\$100

**REDUCED WIDTH**

- Only available in **"Electra Series"**.
- Use next standard size cabinet **larger** than the requested size.
- Minimum width of cabinet without a drawer is 6"
- Minimum width of cabinet with a drawer and glides is 7".
- Some cabinets may not be able to be modified.
- Corner cabinets excluded. Custom quote only.
- Specify width after code, i.e. B1D3034-RW29
- Reduce width in increments of 1/4". i.e. W3030-RW29.75.
- Depending on size of stiles and rails, modification can lead to slab doors and drawer fronts.

Examples:

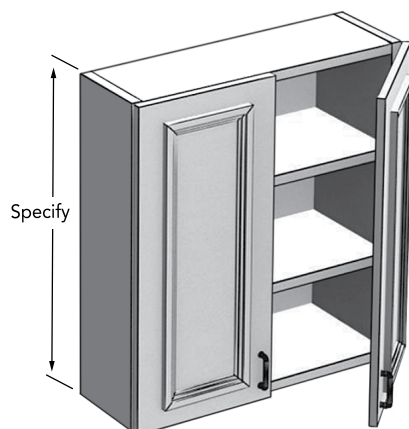


CODE	WALL	BASE	VANITY	TALL
RW	\$200	\$200	\$200	\$200

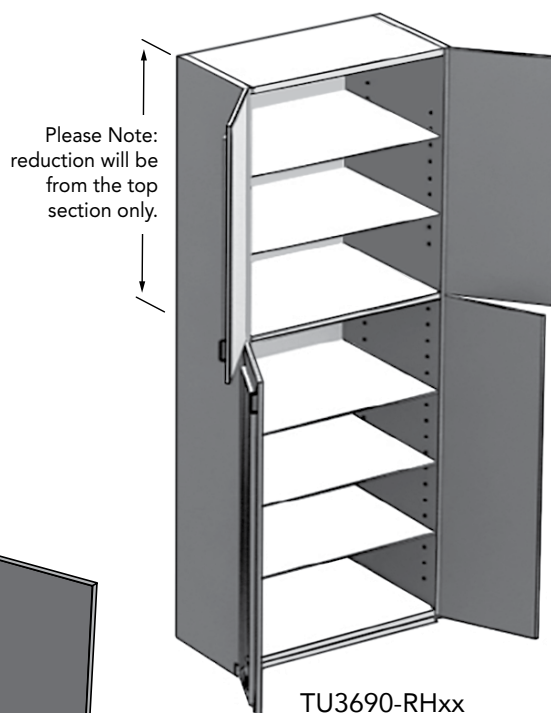
## REDUCED HEIGHT

- Only available in "**Electra Series**".
- Use next standard size cabinet **larger** than the requested size.
- Minimum height of base cabinet without a drawer is 15". One drawer base cabinet is 21". Two drawer base cabinet is 18". Three drawer base cabinet is 24". Four drawer base cabinet is 31".
- Minimum height of a wall cabinet is 6".
- Minimum tall cabinet height to be 66".
- Specify height after code, i.e. TU1884-RH81.
- Reduce height in increments of 1/4". i.e. TU1884-RH66.75.
- Depending on size of stiles and rails, modification can lead to slab doors and drawer fronts.
- Upper section of standard tall cabinets will decrease in size with the modification.
- Lower section of standard base and vanity cabinets will decrease in size. Top drawer, if applicable, will remain the same size.
- All other cabinet configurations to be custom quoted.

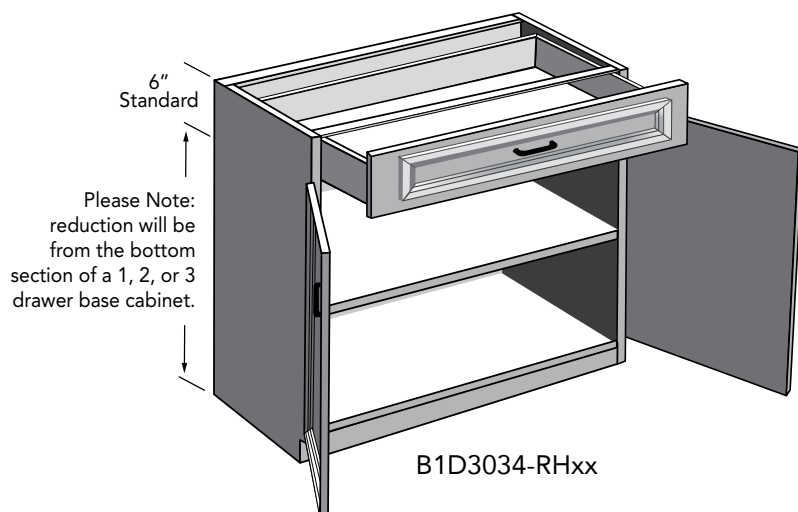
Examples:



W3030-RHxx



TU3690-RHxx



B1D3034-RHxx

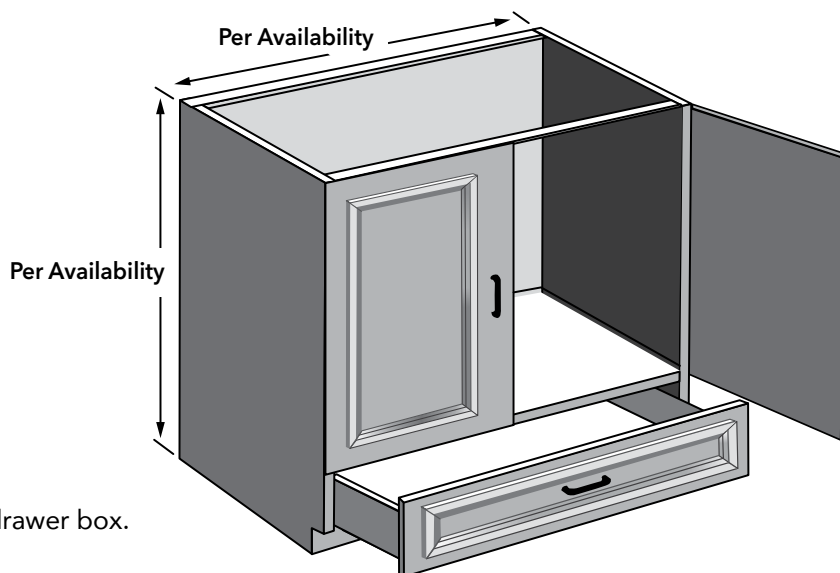
CODE	WALL	BASE	VANITY	TALL
RH	\$200	\$200	\$200	\$200

## SINK BASE & BASE WITH INVERTED DRAWER

Available:

- B1D1234 - BID3934
- B2DD3034 - B2DD4234
- BSC1534 - BSC4234
- B1D1228 - BID3628
- VBSC1834 - VBSC4234
- VB1D1234 - VB1D3934
- VB2DD3034 - VB2DD4234
- Specify part number followed by modification code.  
Example: VB1D3634-IDF

A fixed bottom floor will be added above drawer box.

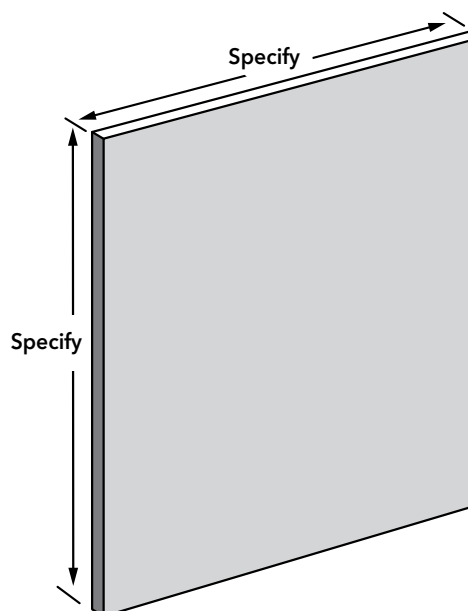


CODE	BASE	DESK	VANITY
IDF	\$150	\$150	\$150

## CUSTOM CUT PANELS, 3/4" & 1/4"

Available:

- FP3496 (3/4")
- FP4834 (3/4")
- RP2696(3/4")
- FS4896 (1/4")
- All 3/4" Wall Panels
- All 3/4" Base Panels
- All 3/4" Tall Panels
- Specify part number to be cut, followed by modification code and size.  
Examples:  
FP3496-CCP3492 = 34" X 92" panel  
WFP42-FB-CCP1142 = 11" X 42" panel  
FS4896-CCP4170 = 41" X 70" panel
- Includes up to 2 cuts per panel.  
(custom quote needed on 3 or more cuts if using the same panel).



CODE	PANELS
CCP	\$120

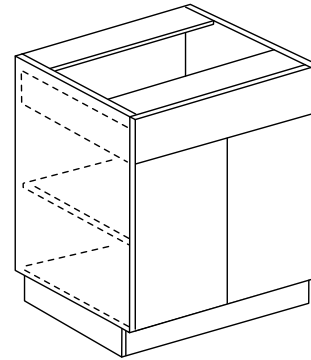
All 3/4" panels will be edged on cut side (PVC edge banding).  
1/4" panels will not have edging.

**RECESSED TOE KICK**

- Specify left, right, or back.
- Standard toe space (4 1/2" high by 3" deep) is applied to the side or back of cabinet. Entire toe space requires finished toe kick material.
- i.e. BID3034-RTKL

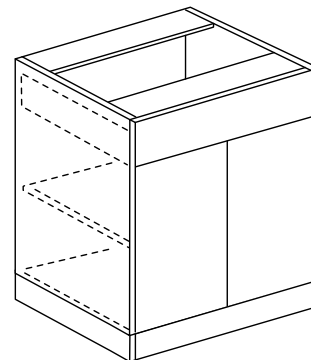
ITEM	Description	PRICE
RTKL	Recessed Toe Kick Left	\$88
RTKR	Recessed Toe Kick Right	\$88
RTKBACK	Recessed Toe Kick Back	\$88

RTKL shown

**FLUSH TOE KICK**

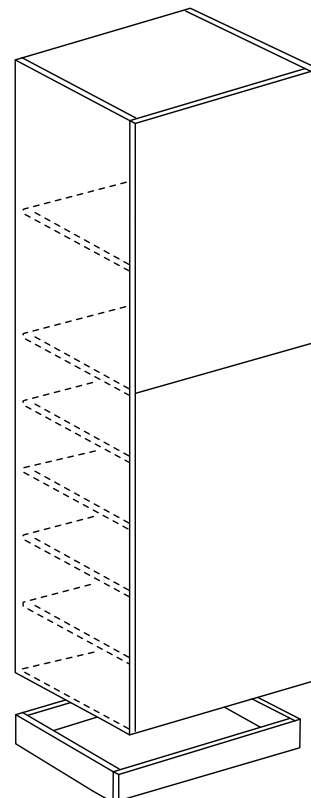
- Flush apron at the bottom of a cabinet with a toe kick area.
- Toe kick material will be needed to finish front.
- i.e. BID3034-FTK

ITEM	Description	PRICE
FTK	Flush Toe Kick	\$78

**LOOSE TOE KICK**

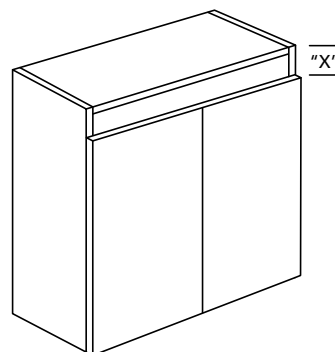
- LTK - Toe kick platform is shipped loose and is the same width as the cabinet. Trim at site as needed.
- i.e. TU3096-LTK

ITEM	Description	PRICE
LTK	Loose Toe Kick	\$80



## MOULDING APRON FRONT

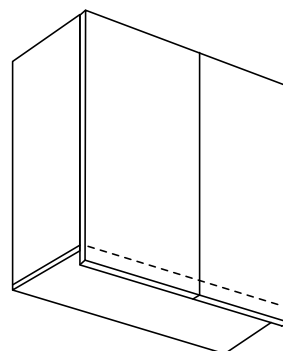
- Moulding apron front is available on the top of wall and tall cabinets (for the installation of moulding).
- "X" space will be the same color and material as the door.
- Specify dimension "X" on order. Maximum "X" dimension = 5" high. Minimum "X" Dimension = 3/4".
- When MAF is specified, top door reveal is increased by the dimension of "X". Overall cabinet height does not change.
- **Not available in Classic Series**
- i.e. W3030-MAF3 (= 3" apron at top)



ITEM	Description	PRICE
MAF	Moulding Apron Front	\$135

## EXTEND DOORS DOWN

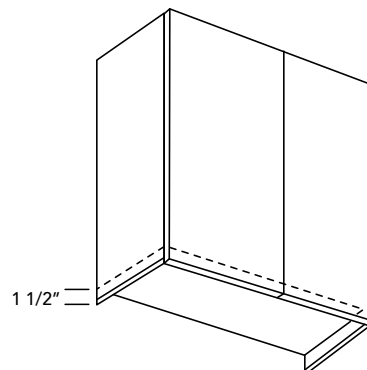
- Used as a finger pull option.
- Door(s) extend 1 1/2" down from overall cabinet height.
- Submit custom quote form for lengths greater than 1 1/2".
- Cabinet box size does not change when extended.
- Hinge location does not change.
- **Not available in Classic Series**
- i.e. W3030-EXTD



ITEM	Description	PRICE
EXTD	Extend Doors Down	\$160

## RECESSED BOTTOM WALL

- Standard wall cabinet bottom is recessed up into cabinet to create a 1 1/2" deep recess.
- Recessed bottom does not change door height or overall cabinet height.
- Fixed bottom shelf moves up at bottom of wall cabinet 1 1/2".
- Used as light rail option.
- i.e. W3030-RBW



ITEM	Description	PRICE
RBW	Recessed Bottom Wall	\$140

**FINISHED INTERIOR WALLS**

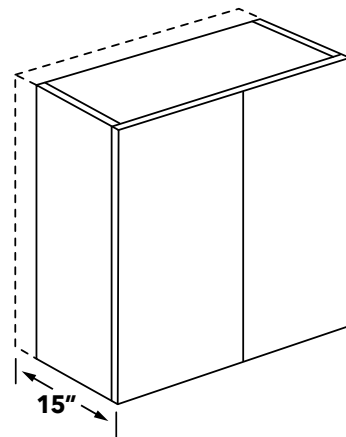
- Additional 50% upcharge of wall cabinet SKU price.
- All interior surfaces to match door color selection.
- Matching interior may have different sheen.
- i.e. W3030-FIW

ITEM	Description	PRICE
FIW	Finished Interior Walls	+50%

**INCREASE DEPTH WALL 15" DEEP**

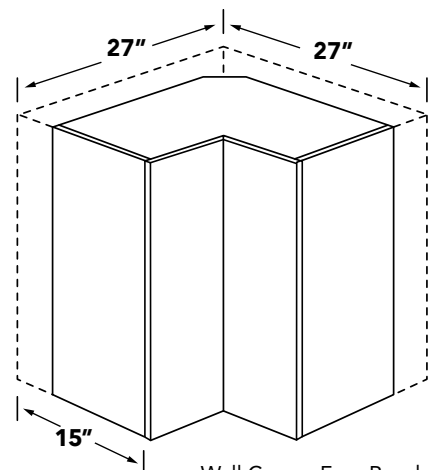
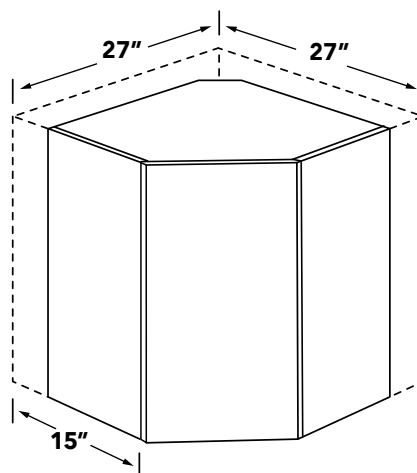
- For 12" deep wall cabinets only.
- For WDC & WER corner wall cabinets use IDWC15.
- i.e. W3030-IDW15.

ITEM	Description	PRICE
IDW15	Increase Depth Wall 15"	+12%

**INCREASE DEPTH WALL CORNER 15" DEEP**

- For WDC (Wall Corner) and WER (Wall Corner Easy Reach) cabinets.
- i.e. WDC2430-IDWC15, WER2430-IDWC15.

Wall Corner  
WDC2430-IDWC15



Wall Corner Easy Reach  
WER2430-IDWC15

ITEM	Description	PRICE
IDWC15	Increase Depth Wall Corner 15"	\$175





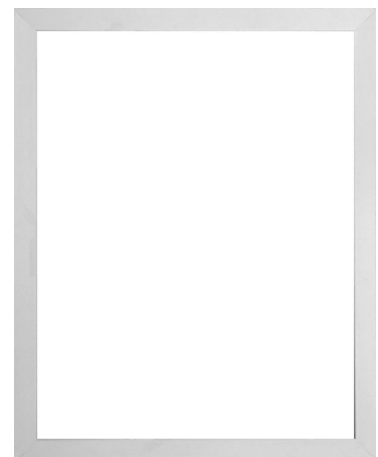
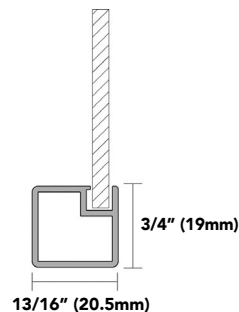
## CUSTOM ALUMINUM FRAME CABINET DOORS

Contact Envoy for dimension exceeding recommended maximums.

- Price is per door, based on square foot range.
- Price includes glass.
- Handle holes cannot be drilled through glass on site.
- Hardware not included.
- Price is added to overall cabinet price.
- Square foot is  $L \times W \div 144$ . i.e.  $W2130 = 21 \times 30 \div 144 = 4.375$  sq. ft.
- Price each door individually. i.e.  $W4230$  would equal 2 doors at 4.375 sq ft each.
- Additional glass and frame color options available by custom price quote request.
- Specify aluminum door item number on 2020 order form or Excel order form to be applied to the cabinet desired.

### Aluminum Doors EAF001

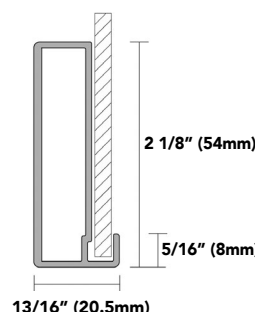
ITEM	Description	PRICE
EAF001-CGNA3	Clear Glass on Natural Aluminum 0 - 3 sq. ft.	\$653
EAF001-CGNA6	Clear Glass on Natural Aluminum 3.01 - 6 sq. ft.	\$926
EAF001-CGNA9	Clear Glass on Natural Aluminum 6.01 - 9 sq. ft.	\$1,199
EAF001-SGNA3	Satin Glass on Natural Aluminum 0 - 3 sq. ft.	\$760
EAF001-SGNA6	Satin Glass on Natural Aluminum 3.01 - 6 sq. ft.	\$1,148
EAF001-SGNA9	Satin Glass on Natural Aluminum 6.01 - 9 sq. ft.	\$1,517
EAF001-CGBS3	Clear Glass on Brushed Stainless 0 - 3 sq. ft.	\$847
EAF001-CGBS6	Clear Glass on Brushed Stainless 3.01 - 6 sq. ft.	\$1,248
EAF001-CGBS9	Clear Glass on Brushed Stainless 6.01 - 9 sq. ft.	\$1,649
EAF001-SGBS3	Satin Glass on Brushed Stainless 0 - 3 sq. ft.	\$739
EAF001-SGBS6	Satin Glass on Brushed Stainless 3.01 - 6 sq. ft.	\$1,036
EAF001-SGBS9	Satin Glass on Brushed Stainless 6.01 - 9 sq. ft.	\$1,330



Maximum width & height is 48".  
Minimum width & height is 5.5".  
Maximum square footage is 8 sq. ft.

### Aluminum Doors EAF002

ITEM	Description	PRICE
EAF002-CGNA3	Clear Glass on Natural Aluminum 0 - 3 sq. ft.	\$789
EAF002-CGNA6	Clear Glass on Natural Aluminum 3.01 - 6 sq. ft.	\$1,096
EAF002-CGNA9	Clear Glass on Natural Aluminum 6.01 - 9 sq. ft.	\$1,402
EAF002-SGNA3	Satin Glass on Natural Aluminum 0 - 3 sq. ft.	\$895
EAF002-SGNA6	Satin Glass on Natural Aluminum 3.01 - 6 sq. ft.	\$1,308
EAF002-SGNA9	Satin Glass on Natural Aluminum 6.01 - 9 sq. ft.	\$1,721
EAF002-CGBS3	Clear Glass on Brushed Stainless 0 - 3 sq. ft.	\$894
EAF002-CGBS6	Clear Glass on Brushed Stainless 3.01 - 6 sq. ft.	\$1,227
EAF002-CGBS9	Clear Glass on Brushed Stainless 6.01 - 9 sq. ft.	\$1,559
EAF002-SGBS3	Satin Glass on Brushed Stainless 0 - 3 sq. ft.	\$1,000
EAF002-SGBS6	Satin Glass on Brushed Stainless 3.01 - 6 sq. ft.	\$1,439
EAF002-SGBS9	Satin Glass on Brushed Stainless 6.01 - 9 sq. ft.	\$1,878



Maximum width & height is 96".  
Minimum width & height is 5.5".  
Maximum square footage is 24 sq. ft.

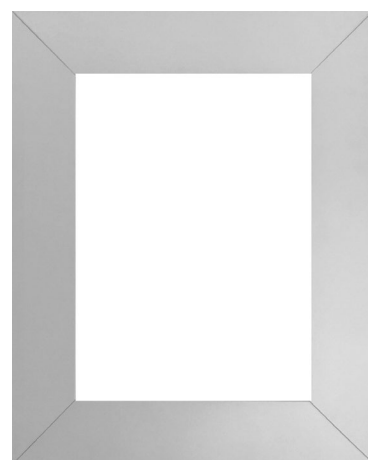
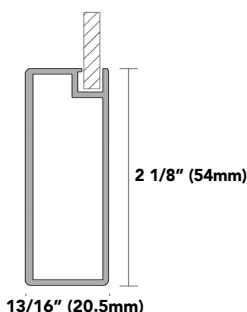
## CUSTOM ALUMINUM FRAME CABINET DOORS

Contact Envoy for dimension exceeding recommended maximums.

- Price is per door, based on square foot range.
- Price includes glass.
- Handle holes cannot be drilled through glass on site.
- Hardware not included.
- Price is added to overall cabinet price.
- Square foot is  $L \times W \div 144$ , i.e.  $W2130 = 21 \times 30 \div 144 = 4.375$  sq. ft.
- Price each door individually. i.e.  $W4230$  would equal 2 doors at 4.375 sq ft each.
- Additional glass and frame color options available by custom price quote request.
- Specify aluminum door item number on 2020 order form or Excel order form to be applied to the cabinet desired.

### Aluminum Doors EAF003

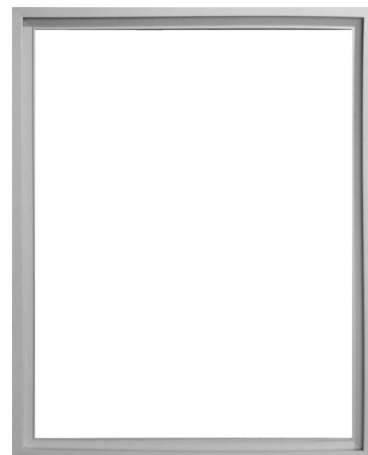
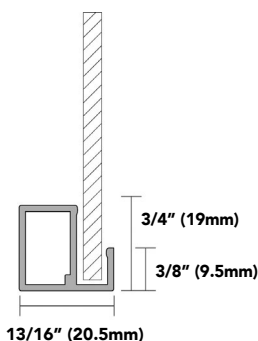
ITEM	Description	PRICE
EAF003-CGNA3	Clear Glass on Natural Aluminum 0 - 3 sq. ft.	\$789
EAF003-CGNA6	Clear Glass on Natural Aluminum 3.01 - 6 sq. ft.	\$1,096
EAF003-CGNA9	Clear Glass on Natural Aluminum 6.01 - 9 sq. ft.	\$1,402
EAF003-SGNA3	Satin Glass on Natural Aluminum 0 - 3 sq. ft.	\$895
EAF003-SGNA6	Satin Glass on Natural Aluminum 3.01 - 6 sq. ft.	\$1,308
EAF003-SGNA9	Satin Glass on Natural Aluminum 6.01 - 9 sq. ft.	\$1,721
EAF003-CGCL3	Clear Glass on Chrome Look 0 - 3 sq. ft.	\$894
EAF003-CGCL6	Clear Glass on Chrome Look 3.01 - 6 sq. ft.	\$1,227
EAF003-CGCL9	Clear Glass on Chrome Look 6.01 - 9 sq. ft.	\$1,559
EAF003-SGCL3	Satin Glass on Chrome Look 0 - 3 sq. ft.	\$1,000
EAF003-SGCL6	Satin Glass on Chrome Look 3.01 - 6 sq. ft.	\$1,439
EAF003-SGCL9	Satin Glass on Chrome Look 6.01 - 9 sq. ft.	\$1,878



Maximum width & height is 96".  
Minimum width & height is 5.5".  
Maximum square footage is 24 sq. ft.

### Aluminum Doors EAF008

ITEM	Description	PRICE
EAF008-CGNA3	Clear Glass on Natural Aluminum 0 - 3 sq. ft.	\$659
EAF008-CGNA6	Clear Glass on Natural Aluminum 3.01 - 6 sq. ft.	\$933
EAF008-CGNA9	Clear Glass on Natural Aluminum 6.01 - 9 sq. ft.	\$1,207
EAF008-SGNA3	Satin Glass on Natural Aluminum 0 - 3 sq. ft.	\$765
EAF008-SGNA6	Satin Glass on Natural Aluminum 3.01 - 6 sq. ft.	\$1,146
EAF008-SGNA9	Satin Glass on Natural Aluminum 6.01 - 9 sq. ft.	\$1,526
EAF008-CGBS3	Clear Glass on Brushed Stainless 0 - 3 sq. ft.	\$717
EAF008-CGBS6	Clear Glass on Brushed Stainless 3.01 - 6 sq. ft.	\$1,006
EAF008-CGBS9	Clear Glass on Brushed Stainless 6.01 - 9 sq. ft.	\$1,294
EAF008-SGBS3	Satin Glass on Brushed Stainless 0 - 3 sq. ft.	\$823
EAF008-SGBS6	Satin Glass on Brushed Stainless 3.01 - 6 sq. ft.	\$1,218
EAF008-SGBS9	Satin Glass on Brushed Stainless 6.01 - 9 sq. ft.	\$1,613

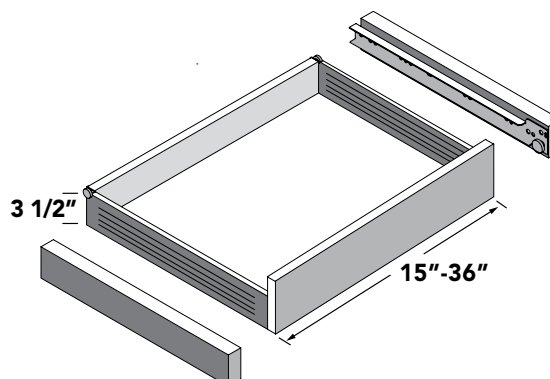


Maximum width & height is 96".  
Minimum width & height is 5.5".  
Maximum square footage is 16 sq. ft.

## SINGLE METAL DRAWER BOX ROLLOUT KIT

Includes parts for mounting into base or tall cabinets. 24" deep cabinets. Face of rollout drawer box to be white edge banded melamine to match bottom and back of drawer material.

ITEM	DESCRIPTION	PRICE
ROT-SMDB15	15" wide Roll out Tray Kit	\$107
ROT-SMDB18	18" wide Roll out Tray Kit	\$110
ROT-SMDB21	21" wide Roll out Tray Kit	\$114
ROT-SMDB24	24" wide Roll out Tray Kit	\$117
ROT-SMDB24S	24" wide Roll out Tray Kit	\$117
ROT-SMDB27	27" wide Roll out Tray Kit	\$120
ROT-SMDB30	30" wide Roll out Tray Kit	\$124
ROT-SMDB33	33" wide Roll out Tray Kit	\$128
ROT-SMDB36	36" wide Roll out Tray Kit	\$132

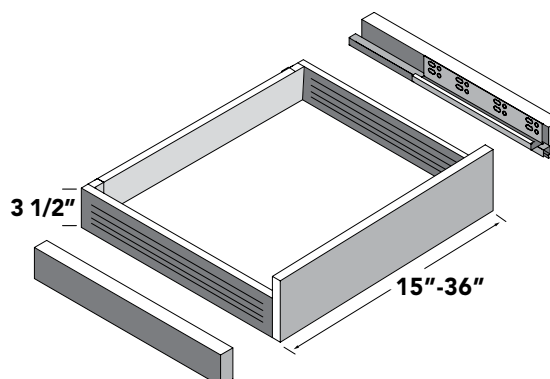


Note: Single door cabinets will have 2 (two) 5/8" spacers (1 1/4") mounted on the hinge side.

## SOFT CLOSE METAL DRAWER BOX ROLLOUT KIT

Includes parts for mounting into base or tall cabinets. 24" deep cabinets. Face of rollout drawer box to be grey edge banded melamine to match bottom and back of drawer material.

ITEM	DESCRIPTION	PRICE
ROT-SCMD15	15" wide Roll out Tray Kit	\$194
ROT-SCMD18	18" wide Roll out Tray Kit	\$200
ROT-SCMD21	21" wide Roll out Tray Kit	\$206
ROT-SCMD24	24" wide Roll out Tray Kit	\$212
ROT-SCMD24S	24" wide Roll out Tray Kit	\$212
ROT-SCMD27	27" wide Roll out Tray Kit	\$218
ROT-SCMD30	30" wide Roll out Tray Kit	\$225
ROT-SCMD33	33" wide Roll out Tray Kit	\$232
ROT-SCMD36	36" wide Roll out Tray Kit	\$239

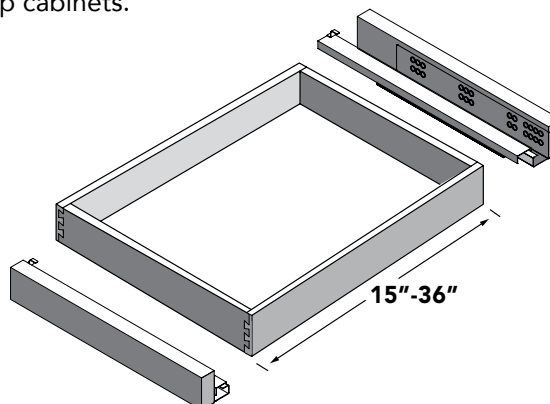


Note: Single door cabinets will have 2 (two) 5/8" spacers (1 1/4") mounted on the hinge side.

## SOFT CLOSE BIRCH VENEER DOVETAIL DRAWER BOX ROLLOUT KIT

Includes parts for mounting into base or tall cabinets. 24" deep cabinets.

ITEM	DESCRIPTION	PRICE
ROT-SCDT15	15" wide Roll out Tray Kit	\$187
ROT-SCDT18	18" wide Roll out Tray Kit	\$193
ROT-SCDT21	21" wide Roll out Tray Kit	\$199
ROT-SCDT24	24" wide Roll out Tray Kit	\$205
ROT-SCDT24S	24" wide Roll out Tray Kit	\$205
ROT-SCDT27	27" wide Roll out Tray Kit	\$211
ROT-SCDT30	30" wide Roll out Tray Kit	\$217
ROT-SCDT33	33" wide Roll out Tray Kit	\$224
ROT-SCDT36	36" wide Roll out Tray Kit	\$230



Note: Single door cabinets will have 2 (two) 5/8" spacers (1 1/4") mounted on the hinge side.

## SINGLE METAL DRAWER SLIDES

### Made for 6" High Drawer Fronts

3 1/2" high sides.

ITEM	DESCRIPTION	PRICE
SMD14S	Minimum size depth = 15"	\$33
SMD18S	Minimum size depth = 19"	\$42
SMD20S	Minimum size depth = 21"	\$49



## SINGLE METAL DRAWER SLIDES

### Made for 12" & 15" High Drawer Fronts

6" high sides.

ITEM	DESCRIPTION	PRICE
SMD14L	Minimum size depth = 15"	\$43
SMD18L	Minimum size depth = 19"	\$59
SMD20L	Minimum size depth = 21"	\$64



## SOFT CLOSE METAL DRAWER SLIDES

### Made for 6" High Drawer Fronts

3 1/2" high sides.

ITEM	DESCRIPTION	PRICE
SCMD12S	Minimum size depth = 13"	\$125
SCMD14S	Minimum size depth = 15"	\$129
SCMD18S	Minimum size depth = 19"	\$130
SCMD20S	Minimum size depth = 21"	\$137

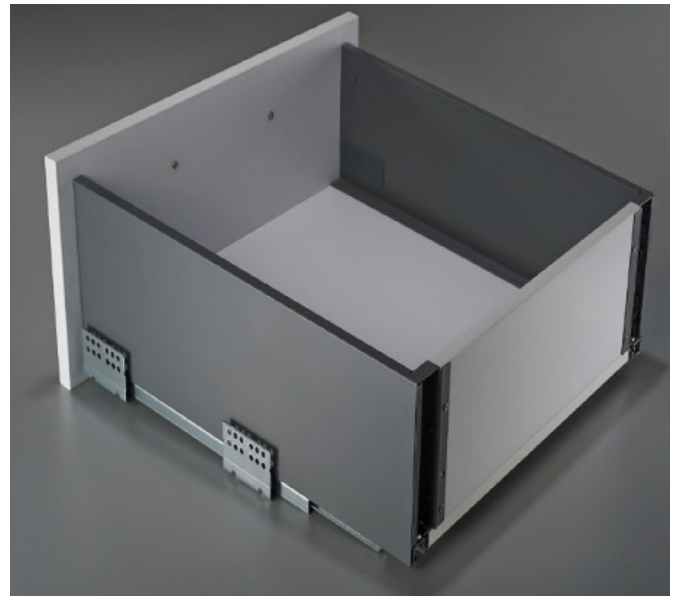


## SOFT CLOSE METAL DRAWER SLIDES

### Made for 12" & 15" High Drawer Fronts

8" high sides.

ITEM	DESCRIPTION	PRICE
SCMD12L	Minimum size depth = 13"	\$139
SCMD14L	Minimum size depth = 15"	\$143
SCMD18L	Minimum size depth = 19"	\$149
SCMD20L	Minimum size depth = 21"	\$163



## UNDERMOUNT SOFT CLOSE DRAWER GLIDES

100lb rated. Six way adjustable.



ITEM	DESCRIPTION	PRICE
USCG12	Minimum size depth = 14"	\$50
USCG15	Minimum size depth = 16"	\$54
USCG18	Minimum size depth = 20"	\$69
USCG21	Minimum size depth = 23"	\$73

## BOX CLIP

Plate with screws. For use with  
H-SC165 & H-165 hinges.

ITEM	DESCRIPTION	PRICE
H-BCLIP	Clip for H-SC165 & H-165	\$4



## SELF CLOSE CORNER DOOR TO DOOR HINGE

Door to door application. Use with clip H-BCLIP.

ITEM	DESCRIPTION	PRICE
H-165	Hinge - WER/BER/BLSS/BLSWT/WDC	\$10



## SELF CLOSE CORNER DOOR TO CASE HINGE

Upgrade. Door to case application. Use with clip H-BCLIP.

ITEM	DESCRIPTION	PRICE
H-SC165	Self Close Hinge - WER/BER/BLSS/BLSWT	\$18



## EURO BOX CLIP

Plate with screws. For use with H-SCH110 & H-SCH45 hinges.

ITEM	DESCRIPTION	PRICE
H-SCCLIP	Clip for H-SCH110 & H-SCH45	\$4



## SOFT CLOSE 110° HINGE

Upgrade. Use with clip H-SCCLIP.

ITEM	DESCRIPTION	PRICE
H-SCH110	Soft Close Hinge	\$12



## DIAGONAL SOFT CLOSE HINGE

Upgrade. Use with clip H-SCCLIP.

ITEM	DESCRIPTION	PRICE
H-SCH45	Soft Close Hinge - WDC only	\$16





## LIFT-UP TOP STAY SYSTEM

Upgrade. Dual-color cover caps set, dark grey main cap+nickel plated small cap.



ITEM	DESCRIPTION	PRICE
H-TSL	Lift-up Hinge with Stay (per pair)	\$179

## WASTE BASKET

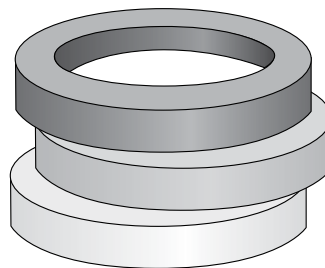
Upgrade.



ITEM	DESCRIPTION	PRICE
ACAN-35GRY	Waste Basket	\$67

## EDGE BAND TAPE 10'

ITEM	DESCRIPTION	PRICE
EDGE-10	7/8" x 10'	\$94



## CHROME TRAY DIVIDER

ITEM	DESCRIPTION	PRICE
ATD-PC-R	Chrome Tray Divider (1 pc)	\$75





## WOOD TRAY DIVIDER WITH 3 SECTIONS

11 3/4" x 22 7/16" x 15 7/16".

3" spacing between dividers.

Species: Hard Maple. Includes back panel, bottom panel, 3 dividers, and installation instructions. For 24" deep and 12" wide cabinets. Trimmable to 9" cabinet.



ITEM	DESCRIPTION	PRICE
ATD3	Wood Tray Divider with 3 sections	\$289

## KNIFE ORGANIZER DRAWER INSERT

18 1/2" x 22" x 2 3/8". For use in 18 1/2" wide drawer, comes with 19 knife slots and built-in front storage partition. Knife sections can be removed and the unit can be trimmed to fit any drawer width. 9" to 24" base cabinet.



ITEM	DESCRIPTION	PRICE
AKO18	Knife Organizer Drawer Insert, 18 1/2" x 22" x 2 3/8"	\$215

## SPICE TRAY ORGANIZER FOR DRAWERS

23 1/2" x 19 1/2" x 1 1/16".

Cut to fit. Species: Birch.

9" to 27" base cabinet.



ITEM	DESCRIPTION	PRICE
ASPO24	Spice Tray Organizer for Drawers, 23 1/2" x 19 1/2" x 1 1/16"	\$189

## 14" DRAWER ORGANIZER/ CUTLERY TRAY

14 5/8" X 22" x 2 1/4". Each section is 2 5/8" wide. Use in 15" wide drawer or cut to fit. Minimum trim depth is 15 3/4".  
 Species: Birch. 15" to 18" base cabinet.



ITEM	DESCRIPTION	PRICE
ADO14	Drawer Organizer / Cutlery Tray, 14 5/8" x 22" x 2 1/4"	\$136

## 20" DRAWER ORGANIZER/ CUTLERY TRAY

20 7/8" x 22" x 2 1/4". Interior sections are 2 5/8" wide. Use in 21" wide drawer or cut to fit. Minimum trim depth is 15".  
 Species: Birch. 21" to 24" base cabinet.



ITEM	DESCRIPTION	PRICE
ADO20	Drawer Organizer/Cutlery Tray, 20 7/8" x 22" x 2 1/4"	\$168

## 11 3/4" SHALLOW SINK TIPOUT TRAY PACK

Stainless Steel. 1 9/16" deep x 3" tall.  
 Sold per pair. Two sets of hinges, two trays, and 20 pcs screws included.



ITEM	DESCRIPTION	PRICE
ATOSS11S-R	11 11/16" Shallow Sink Tipout Tray Pack, Stainless Steel. 1 9/16" x 3"	\$153

## PEG BOARD DRAWER INSERT WITH 9 PEGS

24 1/2" wide x 21 1/4" length x 6 5/8" high.  
 Solid 5/8" Birch plywood UV finished.  
 Inserts into a drawer and can be  
 trimmed to fit. For 24" base cabinet.



ITEM	DESCRIPTION	PRICE
APEG-9	Peg Board Drawer Insert with 9 Pegs	\$225

## PEG BOARD DRAWER INSERT WITH 12 PEGS

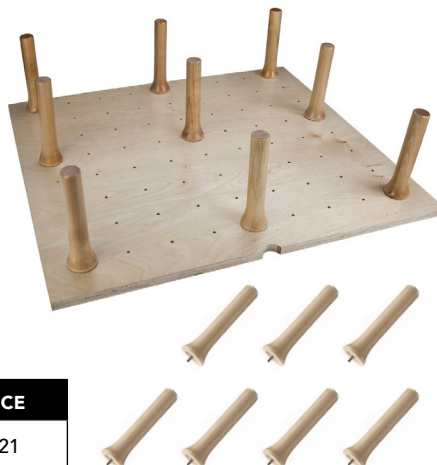
30 1/4" wide x 21 1/4" length x 6 5/8" high.  
 Solid 5/8" Birch plywood UV finished.  
 Inserts into a drawer and can be  
 trimmed to fit. For 27" to 33" base cabinet.



ITEM	DESCRIPTION	PRICE
APEG-12	Peg Board Drawer Insert with 12 Pegs	\$262

## PEG BOARD DRAWER INSERT WITH 16 PEGS

39 1/4" wide x 21 1/4" length x 6 5/8" high.  
 Solid 5/8" Birch plywood UV finished.  
 Inserts into a drawer and can be  
 trimmed to fit. For 36" to 42" base cabinet.



ITEM	DESCRIPTION	PRICE
APEG-16	Peg Board Drawer Insert with 16 Pegs	\$321

## MANHATTAN PULL COLLECTION

Available in three sizes and six finishes.

ITEM	DESCRIPTION	PRICE
AP-92926.10B	5" Manhattan Pull 96mm CC Oil Rubbed Bronze	\$13
AP-92926.BK	5" Manhattan Pull 96mm CC Oil Matte Black	\$13
AP-92926.DP	5" Manhattan Pull 96mm CC Dark Pewter	\$13
AP-92926.PC	5" Manhattan Pull 96mm CC Polished Chrome	\$13
AP-92926.RG	5" Manhattan Pull 96mm CC Rose Gold	\$14
AP-92926.SN	5" Manhattan Pull 96mm CC Satin Nickel	\$14
AP-92927.10B	6" Manhattan Pull 128mm CC Oil Rubbed Bronze	\$15
AP-92927.BK	6" Manhattan Pull 128mm CC Oil Matte Black	\$14
AP-92927.DP	6" Manhattan Pull 128mm CC Dark Pewter	\$15
AP-92927.PC	6" Manhattan Pull 128mm CC Polished Chrome	\$15
AP-92927.RG	6" Manhattan Pull 128mm CC Rose Gold	\$16
AP-92927.SN	6" Manhattan Pull 128mm CC Satin Nickel	\$16
AP-92928.10B	7 1/4" Manhattan Pull 160mm CC Oil Rubbed Bronze	\$18
AP-92928.BK	7 1/4" Manhattan Pull 160mm CC Oil Matte Black	\$17
AP-92928.DP	7 1/4" Manhattan Pull 160mm CC Dark Pewter	\$18
AP-92928.PC	7 1/4" Manhattan Pull 160mm CC Polished Chrome	\$17
AP-92928.RG	7 1/4" Manhattan Pull 160mm CC Rose Gold	\$19
AP-92928.SN	7 1/4" Manhattan Pull 160mm CC Satin Nickel	\$18



Oil Rubbed Bronze



Matte Black



Dark Pewter



Polished Chrome



Rose Gold



Satin Nickel

## MANHATTAN KNOB COLLECTION

1 1/4" diameter (32mm) Round Knob. Height=29.5mm.

Available in six finishes.

ITEM	DESCRIPTION	PRICE
AK-92925.10B	1 1/4"- 32mm Manhattan Knob Oil Rubbed Bronze	\$10
AK-92925.BK	1 1/4"- 32mm Manhattan Knob Matte Black	\$9
AK-92925.DP	1 1/4"- 32mm Manhattan Knob Dark Pewter	\$10
AK-92925.PC	1 1/4"- 32mm Manhattan Knob Polished Chrome	\$10
AK-92925.RG	1 1/4"- 32mm Manhattan Knob Rose Gold	\$10
AK-92925.SN	1 1/4"- 32mm Manhattan Knob Satin Nickel	\$10



Oil Rubbed Bronze



Matte Black



Dark Pewter



Polished Chrome



Rose Gold



Satin Nickel



## VAIL PULL COLLECTION

Available in three sizes and six finishes.

ITEM	DESCRIPTION	PRICE
AP-86373.10B	4 1/2" Vail Pull 96mm CC Oil Brushed Bronze	\$10
AP-86373.BK	4 1/2" Vail Pull 96mm CC Matte Black	\$11
AP-86373.DP	4 1/2" Vail Pull 96mm CC Dark Pewter	\$11
AP-86373.PC	4 1/2" Vail Pull 96mm CC Polished Chrome	\$10
AP-86373.RG	4 1/2" Vail Pull 96mm CC Rose Gold	\$11
AP-86373.SN	4 1/2" Vail Pull 96mm CC Satin Nickel	\$11
AP-86374.10B	5 3/4" Vail Pull 128mm CC Oil Brushed Bronze	\$13
AP-86374.BK	5 3/4" Vail Pull 128mm CC Matte Black	\$12
AP-86374.DP	5 3/4" Vail Pull 128mm CC Dark Pewter	\$14
AP-86374.PC	5 3/4" Vail Pull 128mm CC Polished Chrome	\$13
AP-86374.RG	5 3/4" Vail Pull 128mm CC Rose Gold	\$15
AP-86374.SN	5 3/4" Vail Pull 128mm CC Satin Nickel	\$14
AP-86375.10B	7" Vail Pull 160mm CC Oil Brushed Bronze	\$17
AP-86375.BK	7" Vail Pull 160mm CC Matte Black	\$17
AP-86375.DP	7" Vail Pull 160mm CC Dark Pewter	\$18
AP-86375.PC	7" Vail Pull 160mm CC Polished Chrome	\$17
AP-86375.RG	7" Vail Pull 160mm CC Rose Gold	\$18
AP-86375.SN	7" Vail Pull 160mm CC Satin Nickel	\$17



Oil Brushed Bronze



Matte Black



Dark Pewter



Polished Chrome



Rose Gold



Satin Nickel

## VAIL KNOB COLLECTION

1 1/4" diameter (32mm) Round Flat Top Knob. Height=30mm.  
Available in six finishes.

ITEM	DESCRIPTION	PRICE
AK-1218.10B	1 1/4" - Round Flat Top Vail Knob Oil Brushed Bronze	\$11
AK-1218.BK	1 1/4" - Round Flat Top Vail Knob Matte Black	\$10
AK-1218.DP	1 1/4" - Round Flat Top Vail Knob Dark Pewter	\$11
AK-1218.PC	1 1/4" - Round Flat Top Vail Knob Polished Chrome	\$11
AK-1218.RG	1 1/4" - Round Flat Top Vail Knob Rose Gold	\$11
AK-1218.SN	1 1/4" - Round Flat Top Vail Knob Satin Nickel	\$11



Oil Brushed Bronze



Matte Black



Dark Pewter



Polished Chrome



Rose Gold



Satin Nickel

## MIAMI PULL COLLECTION

Available in three sizes and five finishes.

ITEM	DESCRIPTION	PRICE
AP-80572.BK	4 3/4" Miami Pull 96mm C/C Matte Black	\$9
AP-80572.DP	4 3/4" Miami Pull 96mm C/C Dark Pewter	\$11
AP-80572.PC	4 3/4" Miami Pull 96mm C/C Polished Chrome	\$10
AP-80572.RG	4 3/4" Miami Pull 96mm C/C Rose Gold	\$13
AP-80572.SN	4 3/4" Miami Pull 96mm C/C Satin Nickel	\$11
AP-81572.BK	5 7/8" Miami Pull 128mm C/C Matte Black	\$11
AP-81572.DP	5 7/8" Miami Pull 128mm C/C Dark Pewter	\$12
AP-81572.PC	5 7/8" Miami Pull 128mm C/C Polished Chrome	\$12
AP-81572.RG	5 7/8" Miami Pull 128mm C/C Rose Gold	\$15
AP-81572.SN	5 7/8" Miami Pull 128mm C/C Satin Nickel	\$12
AP-83572.BK	7 1/2" Miami Pull 160mm C/C Matte Black	\$14
AP-83572.DP	7 1/2" Miami Pull 160mm C/C Dark Pewter	\$15
AP-83572.PC	7 1/2" Miami Pull 160mm C/C Polished Chrome	\$14
AP-83572.RG	7 1/2" Miami Pull 160mm C/C Rose Gold	\$18
AP-83572.SN	7 1/2" Miami Pull 160mm C/C Satin Nickel	\$15



Matte Black



Dark Pewter



Polished Chrome



Rose Gold



Satin Nickel

## MIAMI KNOB COLLECTION

1 1/4" diameter (32mm) Round Knob. Height=29.5mm.

Available in six finishes.

ITEM	DESCRIPTION	PRICE
AK-83125.10B	1" Square Knob Oil Brushed Bronze	\$8
AK-83125.BK	1" Square Knob Matte Black	\$8
AK-83125.DP	1" Square Knob Dark Pewter	\$8
AK-83125.PC	1" Square Knob Polished Chrome	\$8
AK-83125.RG	1" Square Knob Rose Gold	\$8
AK-83125.SN	1" Square Knob Satin Nickel	\$8



Oil Brushed Bronze



Matte Black



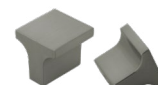
Dark Pewter



Polished Chrome



Rose Gold



Satin Nickel

## MODERN SQUARE COLLECTION

Available in three sizes and six finishes.

ITEM	DESCRIPTION	PRICE
AP-87226.10B	4 1/4" Modern Square Pull 96mm CC Oil Brushed Bronze	\$13
AP-87226.BK	4 1/4" Modern Square Pull 96mm CC Matte Black	\$11
AP-87226.DP	4 1/4" Modern Square Pull 96mm CC Dark Pewter	\$13
AP-87226.PC	4 1/4" Modern Square Pull 96mm CC Polished Chrome	\$12
AP-87226.RG	4 1/4" Modern Square Pull 96mm Rose Gold	\$13
AP-87226.SN	4 1/4" Modern Square Pull 96mm CC Satin Nickel	\$12
AP-87227.10B	5 1/2" Modern Square Pull 128mm CC Oil Brushed Bronze	\$15
AP-87227.BK	5 1/2" Modern Square Pull 128mm CC Matte Black	\$14
AP-87227.DP	5 1/2" Modern Square Pull 128mm CC Dark Pewter	\$15
AP-87227.PB	5 1/2" Modern Square Pull 128mm CC Polished Brass	\$15
AP-87227.PC	5 1/2" Modern Square Pull 128mm CC Polished Chrome	\$14
AP-87227.RG	5 1/2" Modern Square Pull 128mm Rose Gold	\$15
AP-87227.SB	5 1/2" Modern Square Pull 128mm CC Satin Brass	\$15
AP-87227.SN	5 1/2" Modern Square Pull 128mm CC Satin Nickel	\$14
AP-87228.10B	6 3/8" Modern Square Pull 160mm CC Oil Brushed Bronze	\$16
AP-87228.BK	6 3/8" Modern Square Pull 160mm CC Matte Black	\$15
AP-87228.DP	6 3/8" Modern Square Pull 160mm CC Dark Pewter	\$16
AP-87228.PC	6 3/8" Modern Square Pull 160mm CC Polished Chrome	\$15
AP-87228.RG	6 3/8" Modern Square Pull 160mm Rose Gold	\$17
AP-87228.SN	6 3/8" Modern Square Pull 160mm CC Satin Nickel	\$15



Oil Brushed Bronze



Matte Black



Dark Pewter



Polished Chrome



Rose Gold



Satin Nickel

## MODERN PULL COLLECTION

5 3/4" length pull (145mm). Height=25mm.

Available in four finishes.

ITEM	DESCRIPTION	PRICE
AP-21768.10B	5 3/4" - 128mm Deco Pull Oil Brushed Bronze	\$11
AP-21768.PC	5 3/4" - 128mm Deco Pull Polished Chrome	\$10
AP-21768.RG	5 3/4" - 128mm Deco Pull Rose Gold	\$11
AP-21768.SN	5 3/4" - 128mm Deco Pull Satin Nickel	\$10



Oil Brushed Bronze



Polished Chrome



Rose Gold



Satin Nickel

## BAR PULL COLLECTION

ITEM	DESCRIPTION	PRICE
AP-104.BK	Bar Pull 4" OL x 64MM CC x 12mm Dia Matte Black	\$8
AP-104.PC	Bar Pull 4" OL x 64MM CC x 12mm Dia Polished Chrome	\$9
AP-104.RG	Bar Pull 4" OL x 64MM CC x 12mm Dia Rose Gold	\$10
AP-104.SN	Bar Pull 4" OL x 64MM CC x 12mm Dia Satin Nickel	\$8
AP-106.10B	Bar Pull 6" OL x 3" CC x 12mm Dia Oil Brushed Bronze	\$10
AP-106.BK	Bar Pull 6" OL x 3" CC x 12mm Dia Matte Black	\$9
AP-106.DP	Bar Pull 6" OL x 3" CC x 12mm Dia Dark Pewter	\$10
AP-106.PC	Bar Pull 6" OL x 3" CC x 12mm Dia Polished Chrome	\$9
AP-106.SN	Bar Pull 6" OL x 3" CC x 12mm Dia Satin Nickel	\$8
AP-106.RG	Bar Pull 6" OL x 3" CC x 12mm Dia Rose Gold	\$10
AP-1096.10B	Bar Pull 6" OL x 96mm CC x 12mm Dia Oil Brushed Bronze	\$10
AP-1096.BK	Bar Pull 6" OL x 96mm CC x 12mm Dia Matte Black	\$9
AP-1096.DP	Bar Pull 6" OL x 96mm CC x 12mm Dia Dark Pewter	\$10
AP-1096.PB	Bar Pull 6" OL x 96mm CC x 12mm Dia Polish Brass	\$9
AP-1096.PC	Bar Pull 6" OL x 96mm CC x 12mm Dia Polished Chrome	\$9
AP-1096.RG	Bar Pull 6" OL x 96mm CC x 12mm Dia Rose Gold	\$10
AP-1096.SB	Bar Pull 6" OL x 96mm CC x 12mm Dia Satin Brass	\$8
AP-1096.SN	Bar Pull 6" OL x 96mm CC x 12mm Dia Satin Nickel	\$8
AP-107.SN	Bar Pull 7" OL x 128mm CC x 12mm Dia Satin Nickel	\$9
AP-108.10B	Bar Pull 8" OL x 5" CC x 12mm Dia Oil Brushed Bronze	\$11
AP-108.BK	Bar Pull 8" OL x 5" CC x 12mm Dia Matte Black	\$10
AP-108.DP	Bar Pull 8" OL x 5" CC x 12mm Dia Dark Pewter	\$11
AP-108.PC	Bar Pull 8" OL x 5" CC x 12mm Dia Polished Chrome	\$10
AP-108.RG	Bar Pull 8" OL x 5" CC x 12mm Dia Rose Gold	\$12
AP-108.SN	Bar Pull 8" OL x 5" CC x 12mm Dia Satin Nickel	\$9
AP-109.SN	Bar Pull 9" OL x 160mm CC x 12mm Dia Satin Nickel	\$10
AP-110.10B	Bar Pull 10" OL x 7" CC x 12mm Dia Oil Brushed Bronze	\$12
AP-110.DP	Bar Pull 10" OL x 7" CC x 12mm Dia Dark Pewter	\$12
AP-110.PC	Bar Pull 10" OL x 7" CC x 12mm Dia Polished Chrome	\$11
AP-110.RG	Bar Pull 10" OL x 7" CC x 12mm Dia Rose Gold	\$13
AP-110.SN	Bar Pull 10" OL x 7" CC x 12mm Dia Satin Nickel	\$10
AP-112.10B	Bar Pull 12" OL x 9" CC x 12mm Dia Oil Brushed Bronze	\$13
AP-112.BK	Bar Pull 12" OL x 9" CC x 12mm Dia Matte Black	\$12
AP-112.PC	Bar Pull 12" OL x 9" CC x 12mm Dia Polished Chrome	\$13
AP-112.RG	Bar Pull 12" OL x 9" CC x 12mm Dia Rose Gold	\$14
AP-112.SN	Bar Pull 12" OL x 9" CC x 12mm Dia Satin Nickel	\$12



Oil Brushed Bronze



Matte Black



Dark Pewter



Polished Brass



Polished Chrome



Rose Gold



Satin Brass



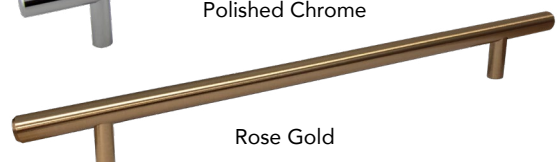
Satin Nickel



Matte Black



Polished Chrome



Rose Gold



## BAR KNOB COLLECTION

2" overall length (50.8mm), 12mm diameter. Height=35mm.  
Available in six finishes.

ITEM	DESCRIPTION	PRICE
AK-102.10B	2" Bar Pull Knob Oil Brushed Bronze	\$7
AK-102.BK	2" Bar Pull Knob Matte Black	\$7
AK-102.PC	2" Bar Pull Knob Polished Chrome	\$7
AK-102.RG	2" Bar Pull Knob Rose Gold	\$7
AK-102.SN	2" Bar Pull Knob Satin Nickel	\$7
AK-102.SS	2" Bar Pull Knob Stainless Steel	\$11



Oil Brushed Bronze



Matte Black



Polished Chrome



Rose Gold



Satin Nickel



Stainless Steel

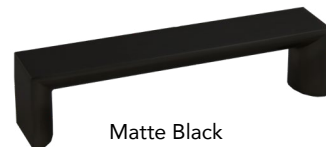
## DECO PULL COLLECTION

Available in two sizes and five finishes.

ITEM	DESCRIPTION	PRICE
AP-81456.10B	4" - 96mm Deco Pull Oil Brushed Bronze	\$15
AP-81456.BK	4" - 96mm Deco Pull Matte Black	\$14
AP-81456.PC	4" - 96mm Deco Pull Polished Chrome	\$13
AP-81456.RG	4" - 96mm Deco Pull Rose Gold	\$15
AP-81456.SN	4" - 96mm Deco Pull Satin Nickel	\$14
AP-81458.10B	5 1/2" - 128mm Deco Pull Oil Brushed Bronze	\$17
AP-81458.BK	5 1/2" - 128mm Deco Pull Matte Black	\$17
AP-81458.PC	5 1/2" - 128mm Deco Pull Polished Chrome	\$16
AP-81458.RG	5 1/2" - 128mm Deco Pull Rose Gold	\$18
AP-81458.SN	5 1/2" - 128mm Deco Pull Satin Nickel	\$16



Oil Brushed Bronze



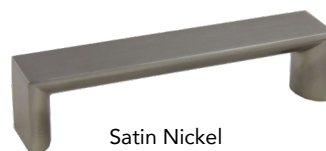
Matte Black



Polished Chrome



Rose Gold



Satin Nickel

## TAB PULL COLLECTION

Available in three sizes and six finishes.

ITEM	DESCRIPTION	PRICE
P-1803.BK	3" Pull Matte Black	\$9
P-1803.PC	3" Pull Polished Chrome	\$9
P-1803.SN	3" Pull Satin Nickel	\$9
P-1806.BK	6" Pull Matte Black	\$13
P-1806.PC	6" Pull Polished Chrome	\$14
P-1806.SN	6" Pull Satin Nickel	\$13
P-1809.BK	9" Pull Matte Black	\$18
P-1809.PC	9" Pull Polished Chrome	\$18
P-1809.SN	9" Pull Satin Nickel	\$17
P-1812.BK	12" Pull Matte Black	\$22
P-1812.PC	12" Pull Polished Chrome	\$23
P-1812.SN	12" Pull Satin Nickel	\$21



Matte Black



Polished Chrome



Satin Nickel

## WASHINGTON KNOB COLLECTION

1 1/4" length (33.6mm) Knob. Height=29mm.

Available in three finishes.

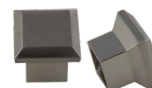
ITEM	DESCRIPTION	PRICE
AK-91090.10B	1 1/4" - 33.6x25mm Knob Oil Brushed Bronze	\$13
AK-91090.RG	1 1/4" - 33.6x25mm Knob Rose Gold	\$13
AK-91090.SN	1 1/4" - 33.6x25mm Knob Satin Nickel	\$13



Oil Brushed Bronze



Rose Gold



Satin Nickel

## KNOB WITH FINGER PULL

1" (26mm) Knob with Finger Pull . Height=26mm.

ITEM	DESCRIPTION	PRICE
AK-82142.SN	3/4" x 1" - 20x26mm Knob Satin Nickel	\$7



Satin Nickel

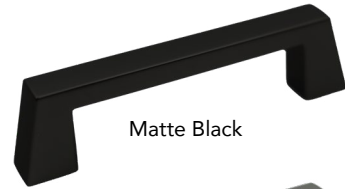
## COLORADO COLLECTION

Available in three sizes and six finishes.

ITEM	DESCRIPTION	PRICE
P-92836.10B	Colorado Pull 96mm CC Oil Brushed Bronze	\$14
P-92836.BK	Colorado Pull 96mm CC Matte Black	\$13
P-92836.DP	Colorado Pull 96mm CC Dark Pewter	\$14
P-92836.PC	Colorado Pull 96mm CC Polished Chrome	\$14
P-92836.RG	Colorado Pull 96mm CC Rose Gold	\$15
P-92836.SN	Colorado Pull 96mm CC Satin Nickel	\$14
P-92837.10B	Colorado Pull 128mm CC Oil Brushed Bronze	\$16
P-92837.BK	Colorado Pull 128mm CC Matte Black	\$15
P-92837.DP	Colorado Pull 128mm CC Dark Pewter	\$16
P-92837.PC	Colorado Pull 128mm CC Polished Chrome	\$16
P-92837.RG	Colorado Pull 128mm CC Rose Gold	\$17
P-92837.SN	Colorado Pull 128mm CC Satin Nickel	\$16
P-92838.10B	Colorado Pull 160mm CC Oil Brushed Bronze	\$19
P-92838.BK	Colorado Pull 160mm CC Matte Black	\$18
P-92838.DP	Colorado Pull 160mm CC Dark Pewter	\$19
P-92838.PC	Colorado Pull 160mm CC Polished Chrome	\$19
P-92838.RG	Colorado Pull 160mm CC Rose Gold	\$21
P-92838.SN	Colorado Pull 160mm CC Satin Nickel	\$20



Oil Brushed Bronze



Matte Black



Dark Pewter



Polished Chrome



Rose Gold



Satin Nickel

## MUSHROOM KNOB

1 1/8" diameter.

Available in five finishes.

ITEM	DESCRIPTION	PRICE
K-81361.10B	31mm Knob Oil Brushed Bronze	\$9
K-81361.BK	31mm Knob Matte Black	\$9
K-81361.PC	31mm Knob Polished Chrome	\$9
K-81361.RG	31mm Knob Rose Gold	\$9
K-81361.SN	31mm Knob Satin Nickel	\$9



Oil Brushed Bronze



Matte Black



Polished Chrome



Rose Gold



Satin Nickel

