

- A** 3/4" full depth adjustable shelves with metal shelf pins. (Shelves = 2 1/2" backset from case on base & tall cabinets. 1" backset on wall cabinets)
- B** Full overlay doors
- C** 3/4" plywood, white furniture board, or grey furniture board bottom and sides
- D** Glue and dowel construction
- E** 1/4" full captured back with 3/4" x 4" hanging rails glued and dowelled (*Details on section 2-4 thru 2-6*)
- F** 3 drawer box options
- G** 6-way adjustable 110° hinge with soft close
- H** 3/4" plywood, white furniture board, or grey furniture board bottom, top and sides

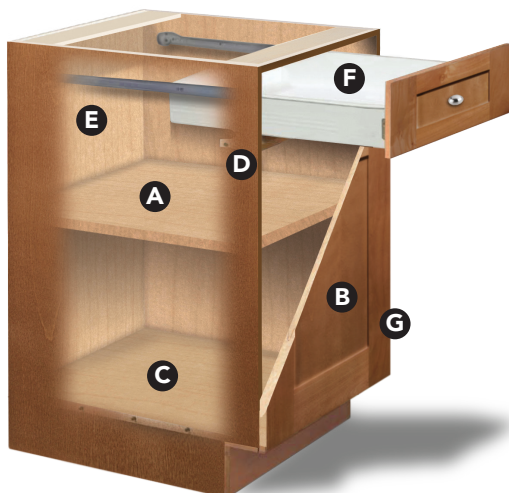
White melamine interior with furniture board case.



Grey melamine interior with furniture board case.



Natural birch veneer interior with plywood case.



Images are for illustration purposes only.

Drawer Options

Metal Drawer Box



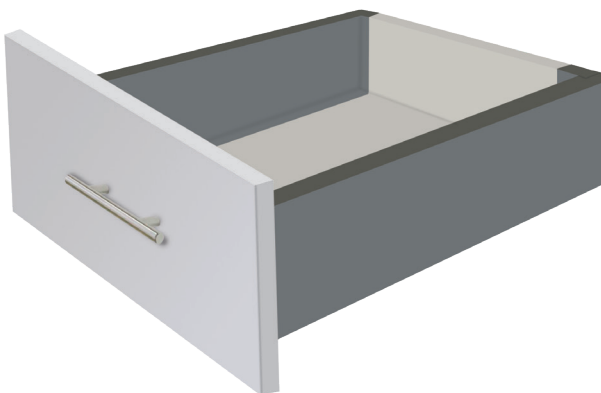
- Standard metal sides
- 5/8" melamine white bottom and back
- 75lb weight rating
- Epoxy glides, 22" deep, extends 18"

Soft Close Birch Plywood Dovetail Drawer Box



- Clear finished birch dovetailed 5/8" birch plywood box
- 1/4" plywood bottom
- 75lb weight rating
- Concealed full extension undermount soft closing adjustable glides

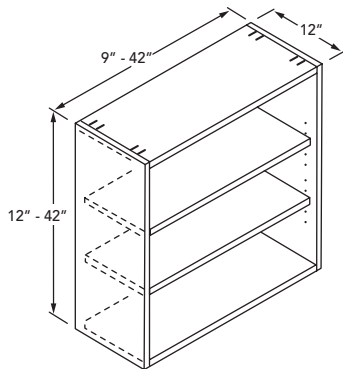
Soft Close Dual Metal Drawer Box



- Dual sided metal box
- 5/8" melamine grey bottom and back
- 75lb weight rating
- Concealed full extension soft closing glides

General Cabinetry Construction

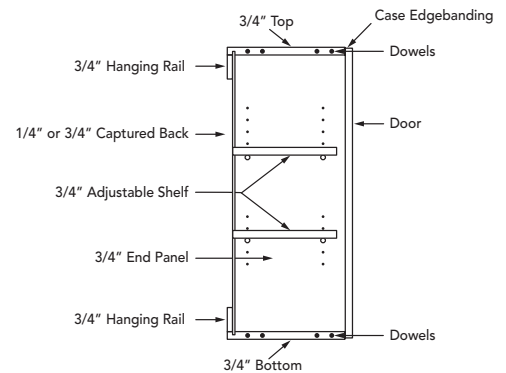
Typical Wall Cabinet



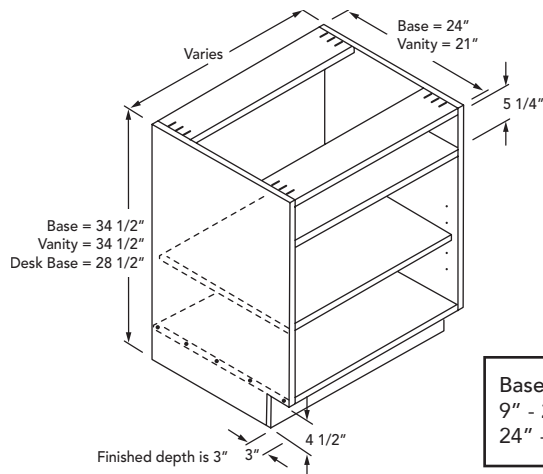
Wall Cabinet Widths:
9" - 24" have one door.
24" - 42" have two doors.

39" & 42" high wall cabinets
have 3 adjustable shelves.

Wall Cabinet Side View

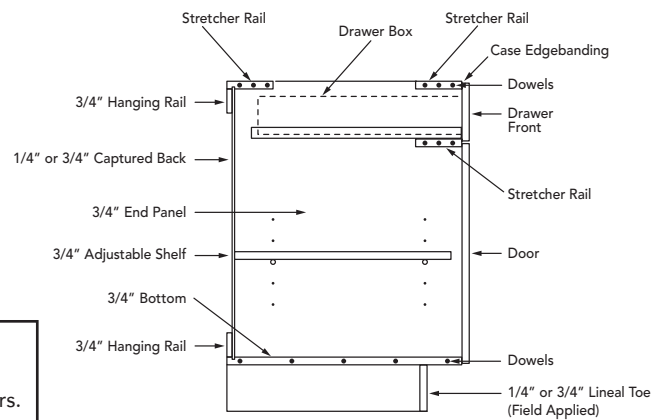


Typical Base or Vanity Cabinet

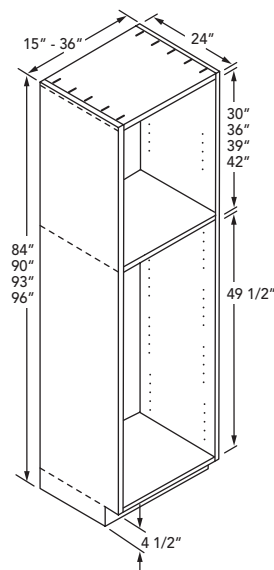


Base Cabinet Widths:
9" - 24" have one door.
24" - 42" have two doors.

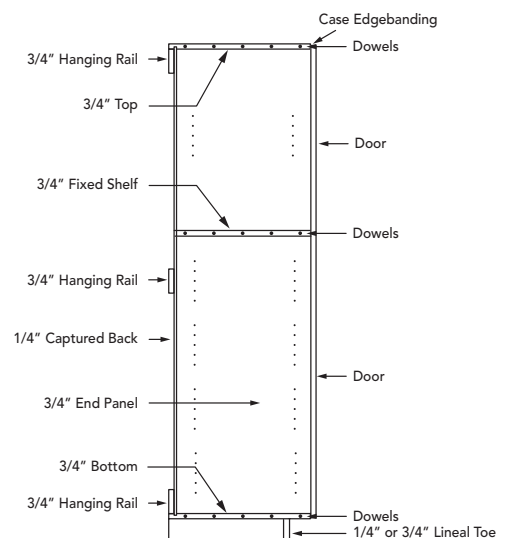
Base Cabinet Side View



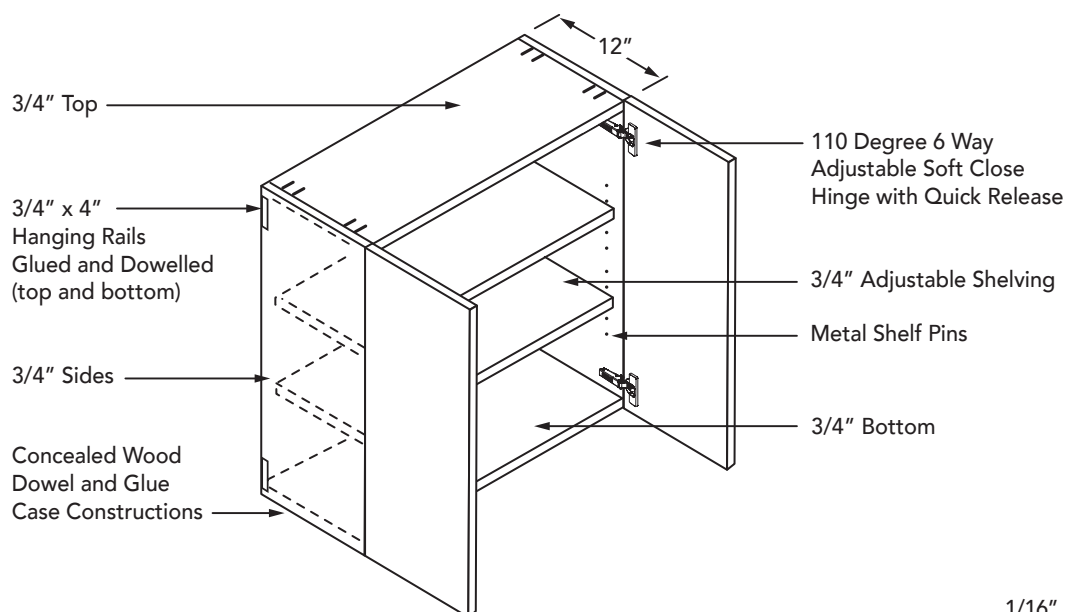
Typical Tall Cabinet



Tall Cabinet Side View



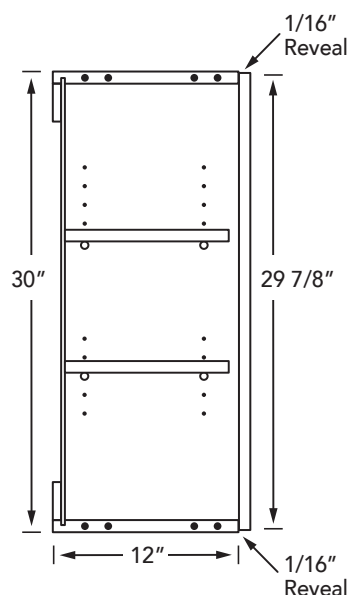
Wall Cabinet Construction



HEIGHTS	ADJUSTABLE SHELVES
12"	0
15"	0
18"	0
21"	1
24"	1
27"	1
30"	2
36"	2
39"	3
42"	3

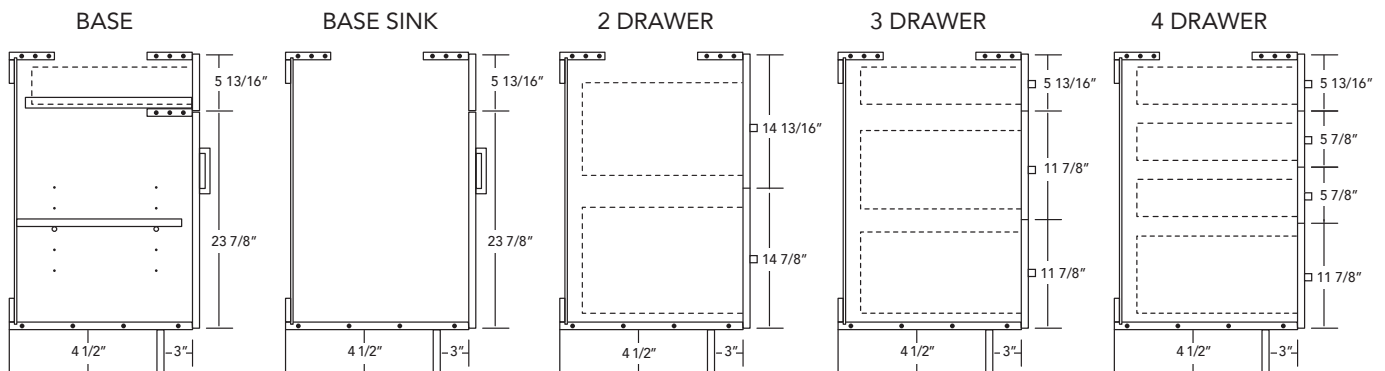
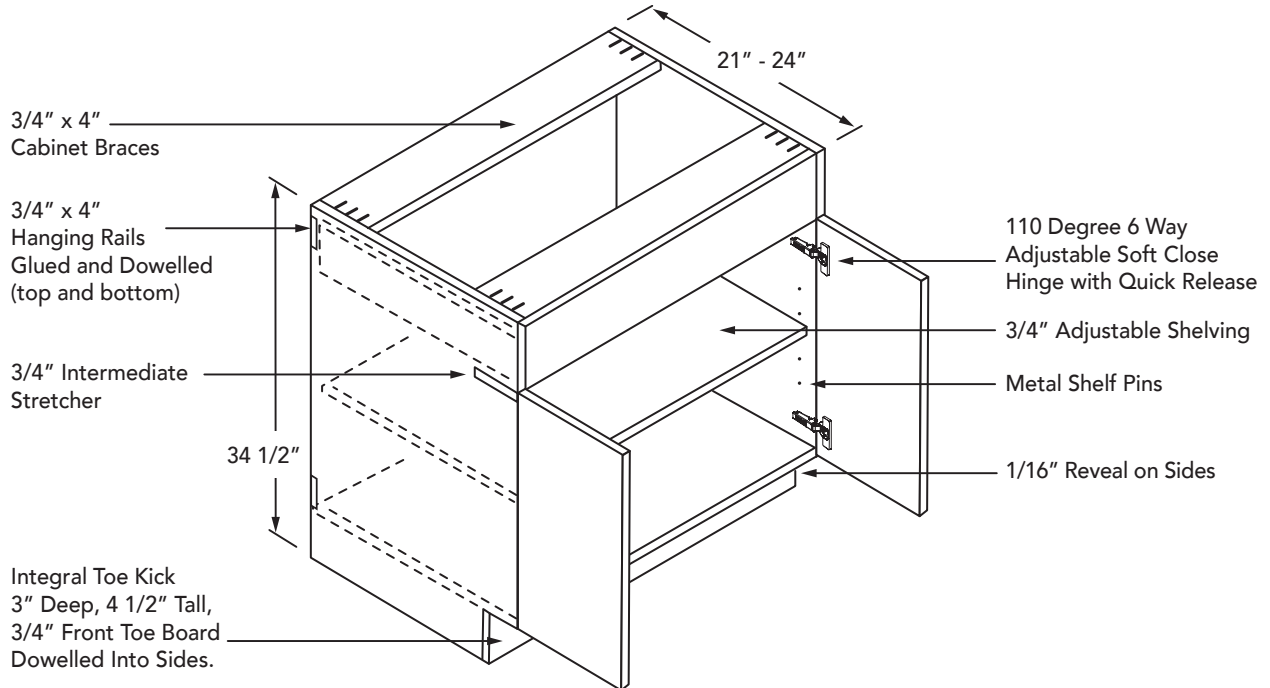
Side View of Typical 30" Tall Wall Cabinets

Minimum Depth = 6"
Maximum Depth = 30"



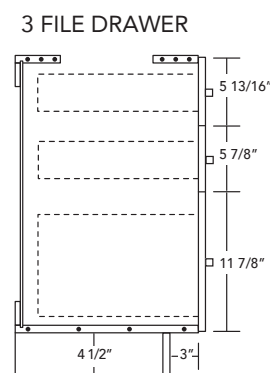
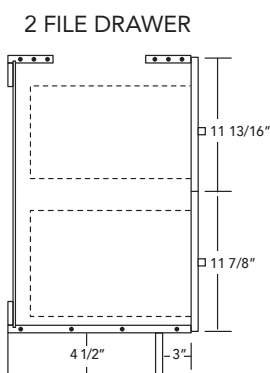
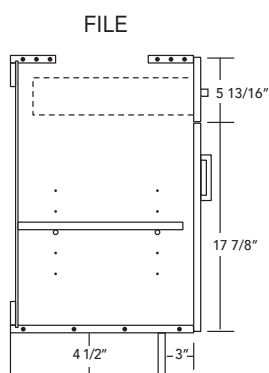
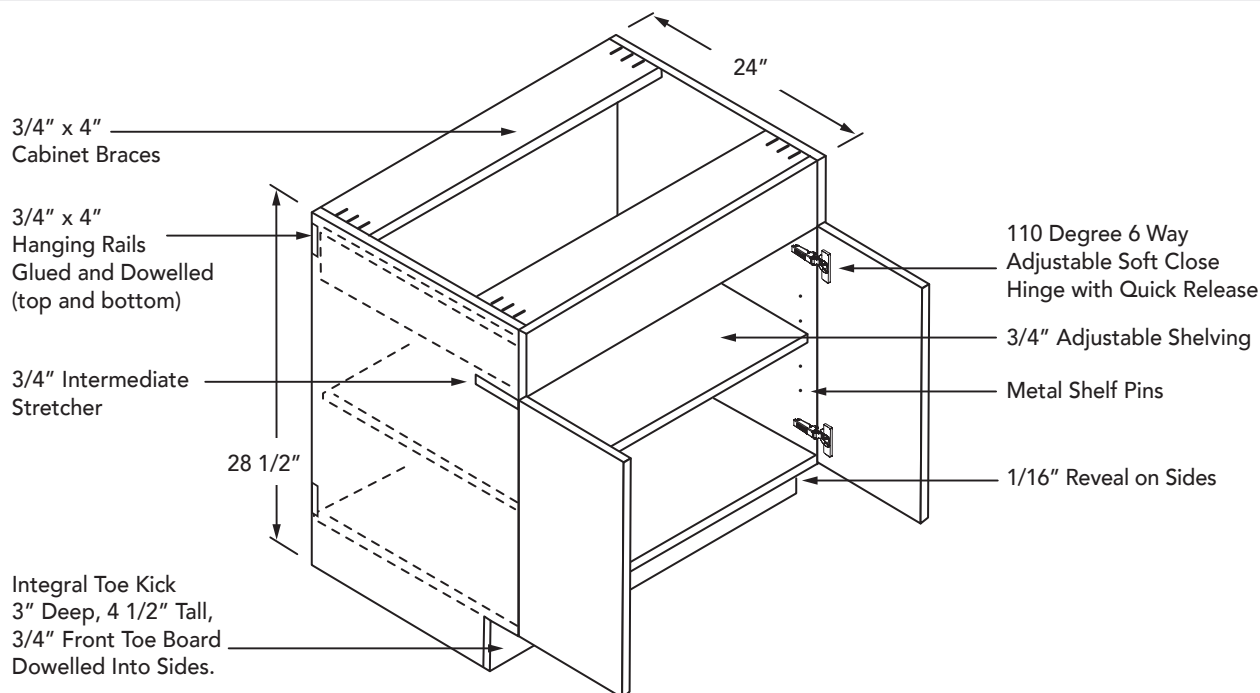
- All Wall cabinet reveals are 1/16" from the top of cabinet and 1/16" on all sides and bottom.
- All Wall cabinets will have one door up to 21" in width. 24" wide cabinets have an option of one or two doors. All Wall cabinets over 24" wide will have two doors.
- Back panels of cabinets are 1/4" on all cabinets 30" or wider. Cabinets less than 30" will come with a 3/4" full solid back.
- Must specify finished end side of cabinet to be factory applied. Interior of finished ends in the "Electra Series" will be white, same or similar color of the door. If you have a wood grain plywood case or white melamine case and do not want a different color on the finished end side please order an additional 3/4" "Wall Gable End Panel" to be field installed.**
- "Classic Series" Finished ends will have coordinating clear birch plywood or white melamine interiors.
- Top and bottom fixed shelves 3/4" dowelled into side panels. All sides 3/4" with 4" x 3/4" hanging rails.

Base & Vanity Cabinet Construction



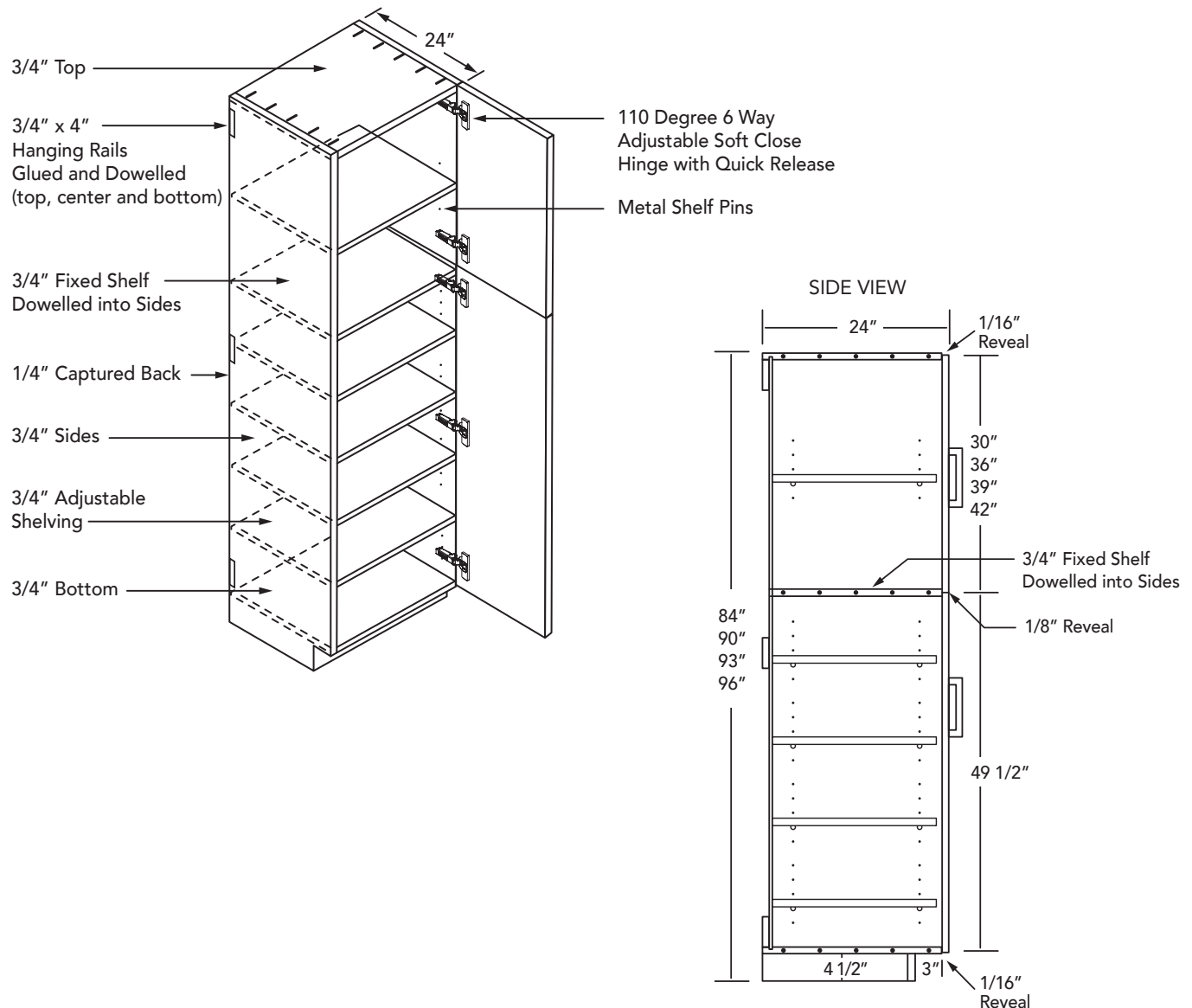
- All Base & Vanity cabinet reveals are 1/8" from the top of cabinet and 1/8" between abutting drawer and or door faces. 1/16" reveals on all sides and bottom of cabinets.
- All Base & Vanity cabinets will have one door up to 21" in width. 24" wide cabinets have an option of one or two doors. All Base & Vanity cabinets over 24" wide will have two doors.
- Back panels of cabinets are 1/4" on all cabinets 30" or wider. Cabinets less than 30" will come with a 3/4" full solid back.
- **Must specify finished end side of cabinet to be factory applied. Interior of finished ends in the "Electra Series" will be white, same or similar color of the door. If you have a wood grain plywood case or white melamine case and do not want a different color on the finished end side please order an additional 3/4" "Base or Vanity Gable End Panel" to be field installed.**
- "Classic Series" Finished ends will have coordinating clear birch plywood or white melamine interiors.
- Bottom fixed shelf 3/4" dowelled into side panels. All sides 3/4" with 4" x 3/4" hanging rails.
- 31 1/2" Vanity Heights and ADA vanities will have same 5 7/8" top drawer fronts with other fascia components adjusted in size according to the standard Base & Vanity cabinet reveals.

Desk Cabinet Construction



- All Desk cabinet reveals are 1/8" from the top of cabinet and 1/8" between abutting drawer and or door faces. 1/16" reveals on all sides and bottom of cabinets.
- All Desk cabinets will have one door up to 21" in width. 24" wide cabinets have an option of one or two doors. All Desk cabinets over 24" wide will have two doors.
- Back panels of cabinets are 1/4" on all cabinets 30" or wider. Cabinets less than 30" will come with a 3/4" full solid back.
- **Must specify finished end side of cabinet to be factory applied. Interior of finished ends in the "Electra Series" will be white, same or similar color of the door. If you have a wood grain plywood case or white melamine case and do not want a different color on the finished end side please order an additional 3/4" "Desk Gable End Panel" to be field installed.**
- "Classic Series" Finished ends will have coordinating clear birch plywood or white melamine interiors.
- Bottom fixed shelf 3/4" dowelled into side panels. All sides 3/4" with 4" x 3/4" hanging rails.

Tall Cabinet Construction



- All tall cabinet reveals are 1/16" from the top of the cabinet and 1/16" on all sides and bottoms. 1/8" between abutting door faces.
- Bottom door section standard at 49 1/2" tall with upper wall section at 30", 36", 39" and 42"
- Custom door configuration for tall cabinets available in the "Electra Series" Must have drawing on "custom price quote request"
- **Must specify finished end side of cabinet to be factory applied. Interior of finished ends in the "Electra Series" will be white, same or similar color of the door. If you have a wood grain plywood case or white melamine case and do not want a different color on the finished end side please order an additional 3/4" "Tall Gable End Panel" to be field installed.**
- "Classic Series" Finished ends will have coordinating clear birch plywood or white melamine interiors.
- Top, center and bottom fixed shelves 3/4" dowelled into side panels. All sides 3/4" with 4" x 3/4" hanging rails.